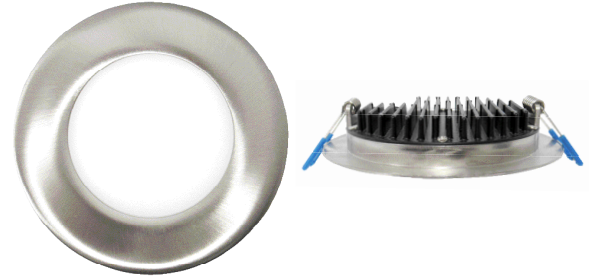
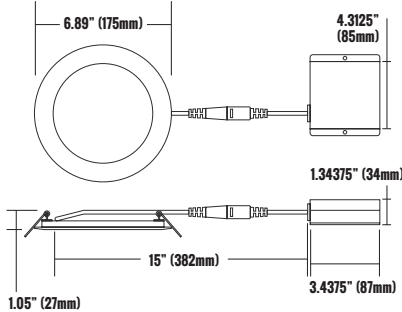


CATALOG #		TYPE
PROJECT		DATE
PREPARED BY		

PRODUCT CODE: DLSWRH6-1514D-BN-FF
6 INCH LED ULTRA SLIM PROFILE DOWNLIGHT/HEAT SINK
B15

RECESSED LOW PROFILE

PRODUCT DESCRIPTION

The Etlin-Daniels DLSWRH6-1514D-BN-FF LED Ultraslim Profile Downlight is a modern, sleek looking energy efficient option for both new construction and retrofit/remodeling projects. It installs easily where there is limited ceiling space due to ductwork, joists and beams. With Etlin-Daniels IP65 rating, our Ultraslim Downlights are suitable for a wide range of both indoor & outdoor applications. Why waste time installing older space restrictive recessed options when the Etlin-Daniels Ultraslim Profile Downlight provides a quick install solution and elegant, superior quality lighting for both residential and commercial applications?

- Aluminum hardwire box with dimmable LED driver
- Includes a 7" cable from driver to fixture
- Built in Heat Sink

FEATURES

- LED light source
- 6" LED downlight
- Durable air tight Aluminum body
- Elegant Brushed Nickel finish
- Etched white Polycarbonate diffuser lens
- Includes two spring loaded clips for mounting to any ceiling material
- The slim profile design allows mounting under joists or duct work
- 50,000hrs L70 life
- Triac dimmable
- IC Air-tight rated
- Suitable for wet location - IP65
- 5 year limited warranty

PRODUCT SPECIFICATIONS (OPTICAL DATA)

PRODUCT SPECIFICATIONS (ELECTRICAL DATA)

LED TYPE	LED QTY	SYSTEM EFFICACY	LUMENS	COLOR TEMPERATURE	BEAM ANGLE	CRI	SYSTEM EFFICIENCY	VOLTAGE	POWER FREQ.	POWER EFFICIENCY	POWER FACTOR	HARMONIC DISTORTION
HONGLI TRONIC	36 CHIPS	60LM/W	900LM	4000K	120°	>80CRI	>90%	AC120V	50-60HZ	>80%	>0.98	<10%

PRODUCT SPECIFICATIONS

WATTAGE	FIXTURE MATERIAL	LIFE SPAN	STORAGE TEMP	OPERATING TEMP	PRODUCT DIMENSIONS	CARTON SIZE
15W	ALUMINUM/ POLYCARBONATE LENS	>50,000 HOURS	- 40°C~+100°C - 40°F~+212°F	- 40°C~+85°C - 40°F~+185°F	6.89 X 1.05 X 6.89 INCHES (175 X 27 X 175 MM)	17.32 X 11.02 X 9.05 INCHES (440 X 280 X 230MM)



ADDITIONAL INFORMATION

INSTALLATION METHOD

RECESSED CEILING MOUNT

FIXTURE COLOR

**BRUSHED NICKEL WITH WHITE
ETCHED DIFFUSER**

CONTROL TYPE

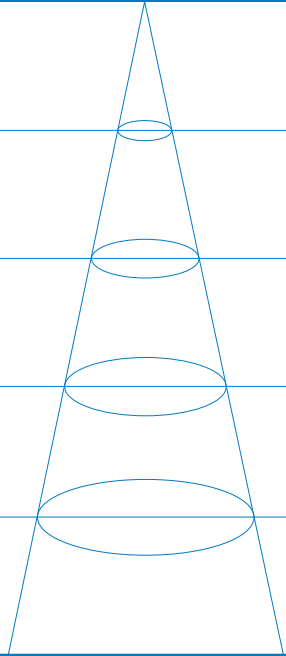
TRIAC DIMMABLE DRIVER INCLUDED

CATALOG #		TYPE
PROJECT		DATE
PREPARED BY		

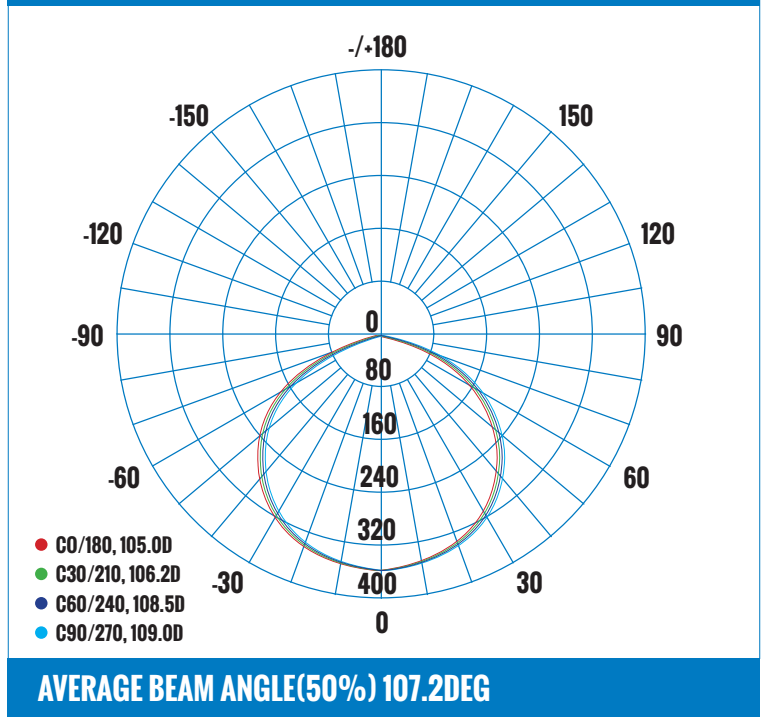
PRODUCT CODE: DLSWRH6-1514D-BN-FF 6 INCH LED ULTRA SLIM PROFILE DOWNLIGHT/HEAT SINK







LUMINAIRE PHOTOMETRIC (TEST REPORT)

ILLUMINANCE (AT A DISTANCE) FLUX OUT: 672.9LM

3.281FT 1M	11.72, 33.90FC 126.1, 364.9LX		8.545FT 260.46CM
6.562FT 2M	2.929, 8.475FC 31.53, 91.22LX		17.09FT 520.92CM
9.843FT 3M	1.302, 3.767FC 14.01, 40.54LX		25.64FT 781.38CM
13.12FT 4M	0.7322, 2.119FC 7.882, 22.81LX		34.18FT 1041.84CM
16.4FT 5M	0.4686, 1.356FC 5.044, 14.60LX		42.73FT 1302.30CM
HT	EAVG/EMAX	ANGLE: 104.96DEG	DIA

LUMINOUS INTENSITY DISTRIBUTION DIAGRAM



CERTIFICATIONS	DRIVER / LED CHIP	120V APPROVED DIMMERS	ACCESSORIES	PRE-MOUNTING PLATE FOR NEW CONSTRUCTION APPLICATIONS AVAILABLE. PLEASE CONTACT ETLIN-DANIELS.
	 	LUTRON: CTCL-153PDH · CTCL-153P · CT-600P LEVITON: 6672 · 6674 COOPER: HCL453PTCCCV6	 72" EXTENSION CORD PART# DLSEC-72  120" EXTENSION CORD PART# DLSEC-120	 PART NO#: DLS6-MP

ORDERING INFORMATION - DLSW SERIES

SERIES	IP RATING	SHAPE	HEAT DISSIPATION	SIZE	WATTAGE	VOLTAGE	COLOR TEMPERATURE	DIMMABLE	COLOR	LENS	TRIM
E.G. DLS	W	R	H	6	15	1	4	D	BN	F	F
DLS - DOWNLIGHT SLIM	W - WET LOCATION	R - ROUND	H - HEAT SINK	6 - 6"	15 - 15W	1 - 120V	4 - 4000K	D - TRIAC	BN - BRUSHED	F - FROSTED	F - FIXED
	IP65								NICKEL		

Head Office - 1850 Wilson Ave. · Toronto, ON · M9M 1A1 · Tel: 416.741.7336 · Fax: 416.741.9104

Toll Free: in Canada. 1.800.661.9610 · in USA. 1.888.762.5384 (SOCKETS4U)

www.etlin-daniels.com · For sales/service questions · sales@etlin.com