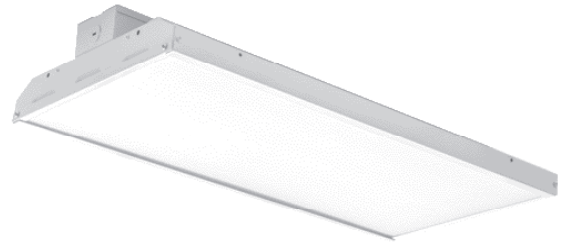
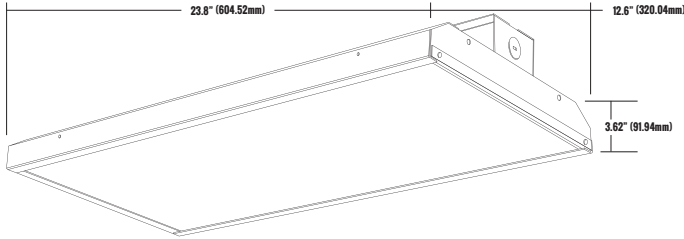


**PRODUCT CODE: HBL2P-110340-WH**
**LED LINEAR HIGH BAY /2FT**


### PRODUCT DESCRIPTION

Etlin-Daniels introduces the new HBL2P series of 2 foot linear highbay fixtures. These fixtures provide high lumen efficacy, excellent color rendering, flexible mounting options, are damp location rated, and have precision designed, glare free frosted optics.

The HBL2P series offers the very best in performance and energy efficient solutions for industrial, commercial, retail and sport applications. Further energy savings can be achieved by taking advantage of the installed 0-10V Continuous Dimming.

Available in both 4000K & 5000K, 110W & 162W.

### FEATURES

- LED Indoor Light Source.
- >130lm/w.
- Multiple Mounting options.
- Shipped with V-Hooks and Chain.
- Wire guards available.
- CRI >80.
- 0-10V Continuous Dimming
- 5 year warranty.
- L70 - 50,000hrs.
- DLC Premium.

### PRODUCT SPECIFICATIONS (OPTICAL DATA)

LED TYPE	LED QTY	SYSTEM EFFICACY	LUMENS	COLOR TEMPERATURE	BEAM ANGLE	CRI	VOLTAGE	POWER FREQ.	POWER EFFICIENCY	POWER FACTOR	HARMONIC DISTORTION
LG	336 CHIPS	130LM/W	14,300LM	4000K	120°	>80CRI	AC347V	50~60HZ	>87%	0.9	10

### PRODUCT SPECIFICATIONS (ELECTRICAL DATA)

### PRODUCT SPECIFICATIONS

WATTAGE	FIXTURE MATERIAL	LIFE SPAN	STORAGE TEMP	OPERATING TEMP	PRODUCT DIMENSIONS	CARTON SIZE
110W	BAKED WHITE ENAMEL/OPAL LENS DIFFUSER	>50,000 HOURS	-20°C--80°C -4°F--176°F	-20°C--50°C -4°F--122°F	23.8 X 12.6 X 3.62 INCHES (604.5 X 320 X 91.94 MM)	24.80 X 12.95 X 3.85 INCHES (630 X 329 X 98 MM)



### ADDITIONAL INFORMATION

#### INSTALLATION METHOD

V HOOK & CHAIN/PENDANT MOUNT APPLICATIONS

#### FIXTURE COLOR

WHITE ENAMEL/OPAL LENS

#### CONTROL TYPE

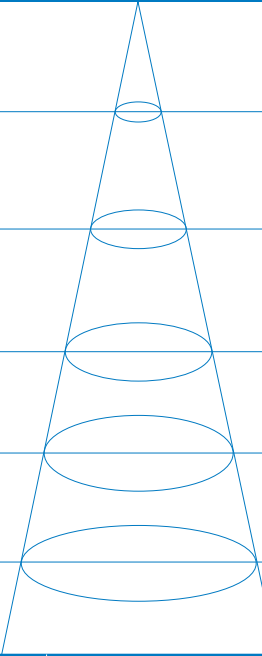
0-10V CONTINUOUS DIMMING

PRODUCT CODE: HBL2P-110340-WH

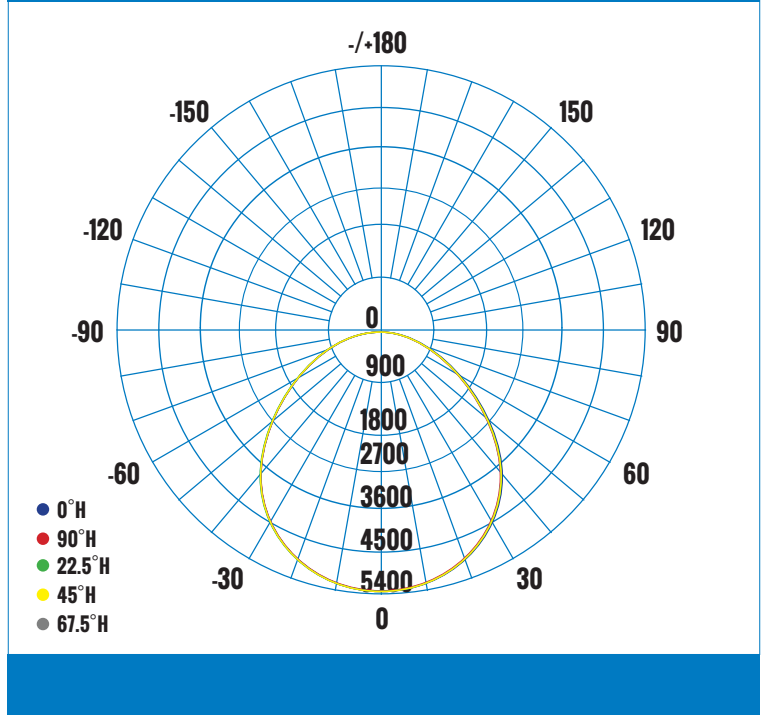
LED LINEAR HIGH BAY/2FT

LUMINAIRE PHOTOMETRIC (TEST REPORT)

ILLUMINANCE (AT A DISTANCE) -		VERT BEAM	HORIZ BEAM
2.29FT 0.7M	11,936.70LX	5.58FT 1.7M	5.58FT 1.7M
4.26FT 1.3M	2,984.18LX	11.48FT 3.5M	11.15FT 3.4M
6.56FT 2.0M	1,326.30LX	17.06FT 5.2M	16.73FT 5.1M
8.85FT 2.7M	746.04LX	22.64FT 6.9M	21.98FT 6.7M
10.82FT 3.3M	477.47LX	28.22FT 8.6M	27.55FT 8.4M
13.12FT 4.0M	331.58LX	34.12FT 10.4M	33.13FT 10.1M
HT	EAVG/EMAX	VERT SPREAD: 104.6DEG HORI SPREAD: 103.3DEG	
		DIA	



LUMINOUS INTENSITY DISTRIBUTION DIAGRAM



CERTIFICATIONS



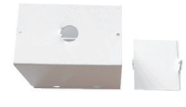
DRIVER/LED CHIP



MOUNTING OPTIONS/ACCESSORIES



WIRE GUARD - PART#: HBL2-WG-126-WH



PENDANT/CENTRE BOX - PART#: HBL-CB6-20GUA

ORDERING INFORMATION - HBL2P SERIES

SERIES	SIZE	WATTS	VOLTAGE	COLOR TEMPERATURE	DIMMABLE	FINISH
E.G. HBL	2P	110	3	4	0	WH
HBL - HIGH BAY LINEAR	2P - 2'	110 - 110W	3 - 347V	4 - 4000K	0 - 0-10V CONTINUOUS DIMMING	WH - WHITE

Head Office - 1850 Wilson Ave. · Toronto, ON · M9M 1A1 · Tel: 416.741.7336 · Fax: 416.741.9104

Toll Free: in Canada. 1.800.661.9610 · in USA. 1.888.762.5384 (SOCKETS4U)

www.etlin-daniels.com · For sales/service questions - sales@etlin.com